



iXm USB Connections & Software Installation



iXm USB Connections & Software Installation

iXm supports two different USB connection modes if used with your computer. One is the so called *Storage Mode* which enables you to exchange files (e.g. your recordings) between your computer and iXm. The other mode is the so called *Configuration Mode* which you can use to configure and monitor your iXm with the help of the Yellowtec *iXm Admin* and *User Software*.

This document shows you:

- How to enter *Storage Mode*
- How to enter *Configuration Mode*
- How to install *Admin* and *User Software*

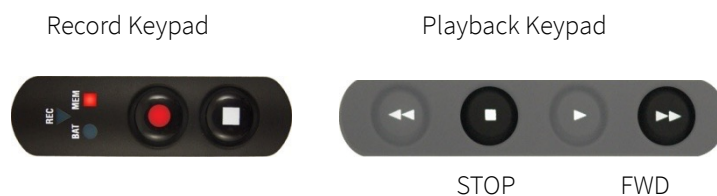
Storage Mode

Turn your iXm on and plug-in the USB cable to establish a physical connection between the device and your computer. The MEM indicator will light up solid yellow indicating that you have entered iXm's *Storage Mode*. Additionally, the BAT indicator will start blinking to indicate that the built-in battery will be charged.

For copying files to your computer you don't need additional software. Just open the Windows Explorer or the Apple Finder. You will find iXm's SD memory card as external flash memory drive on your operating system. Audio files stored on your iXm's SD card can now be saved to the computer. Files can be deleted anytime even with set write protection.

Configuration Mode

If you want to configure your iXm via software, you will need to enter *Configuration Mode*. After turning iXm on, press and hold the FWD and STOP buttons on the playback keypad to enter *Configuration Mode* indicated by a red MEM LED. Now establish a physical USB connection between the device and your computer.



Admin and *User Software* will be needed for configuration as well as for status monitoring. Both are part of the iXm's scope of delivery.

After using the software just physically disconnect iXm from your computer to release iXm's *Configuration Mode*. The red MEM indicator will switch off, and the iXm will enter normal operation mode after a short memory check.

Software Installation

You will need to install the software before you can establish a connection between software and iXm in *Configuration Mode*.

Installing on Apple macOS

Open the Disk Image file (*.dmg) and drop the Yellowtec folder to the Applications folder as displayed. If you have an earlier version of the software installed and will be asked now to stop or exchange the old files with the new one's. Please decide to exchange all files.

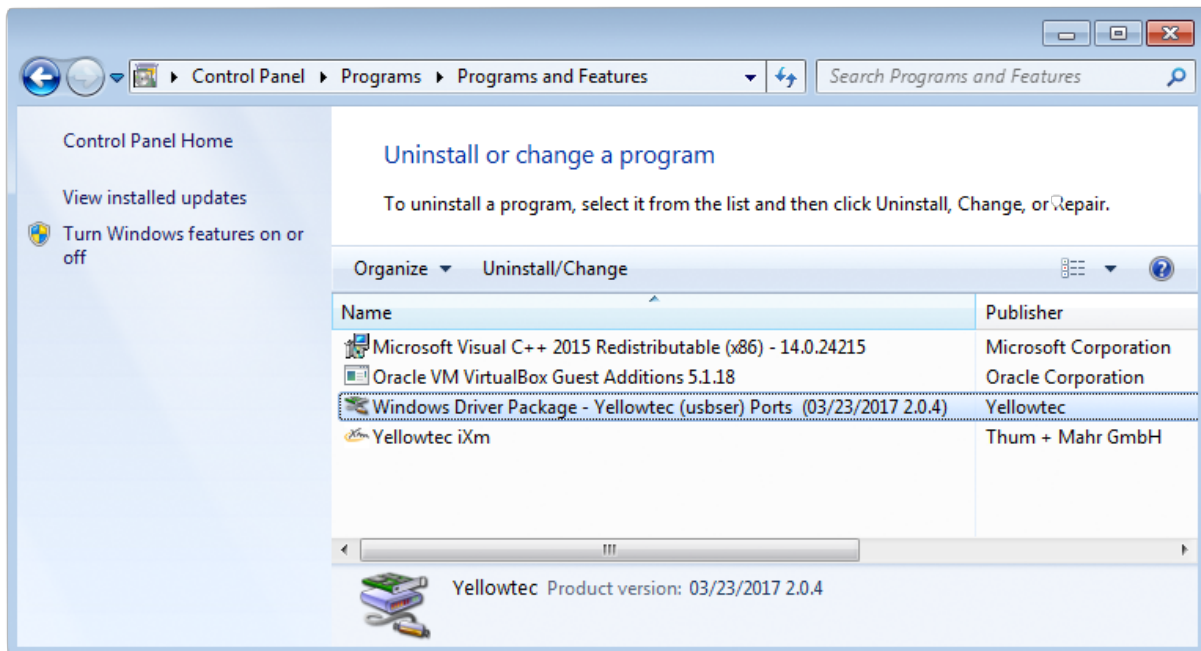


Installing on Microsoft Windows

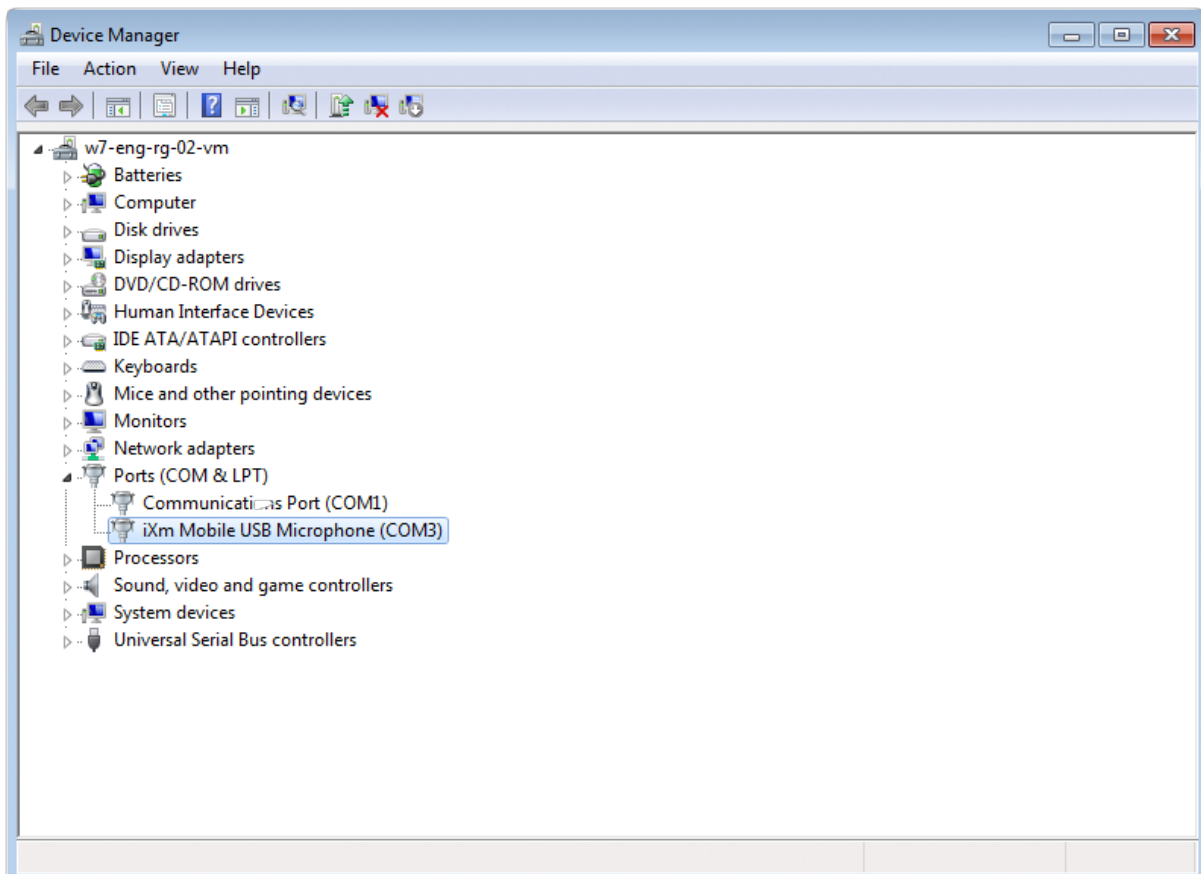
If you have an earlier version of the iXm Software installed, please remove it before installing a new one. Go to *System Settings* and *Programs and Features*. Uninstall both:

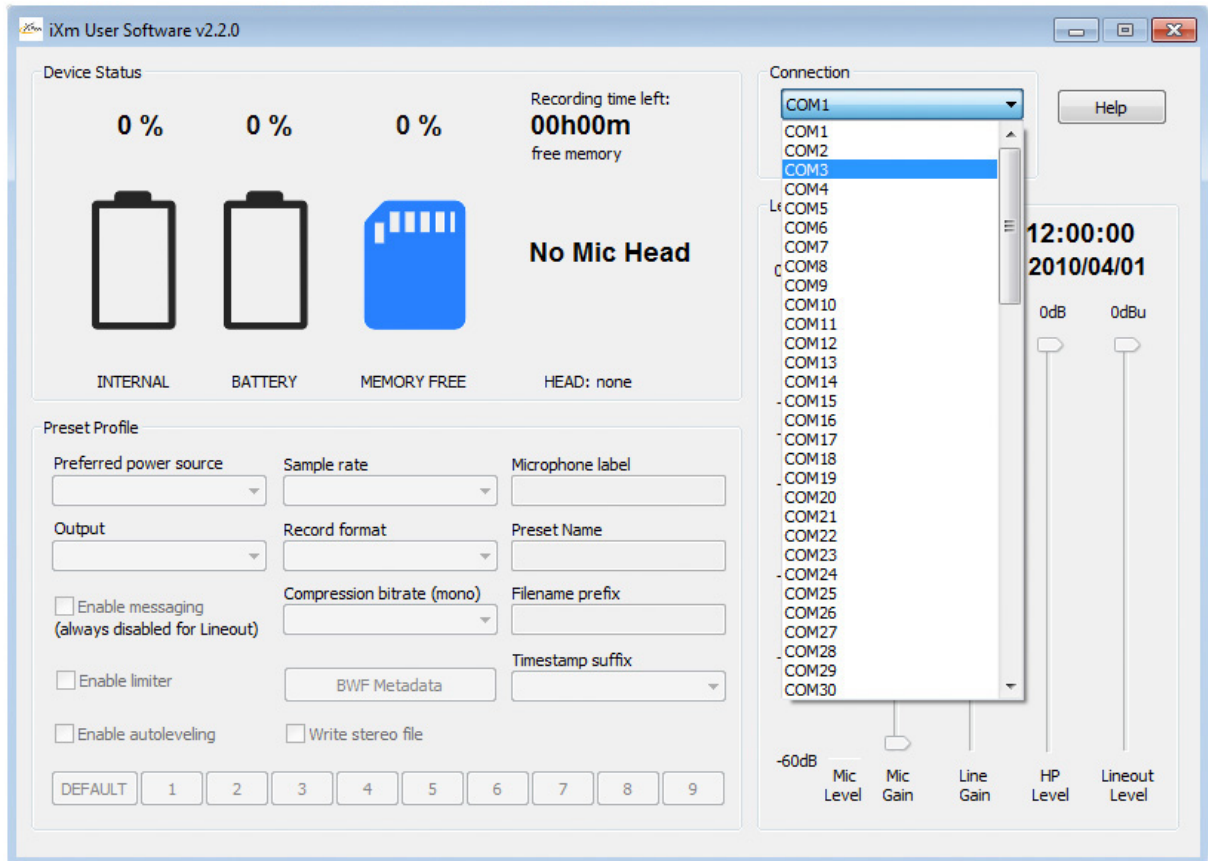
- iXm Software
- Windows Driver Package – Yellowtec (usbser) Ports

If you have completed uninstalling old software packages, start the setup executable file (*.exe) and follow the instructions. The setup will install iXm Software and drivers. After completion you will need to read out the assigned COM port out of Windows' Device Manager.



Make a right click on *My Computer* and select *Properties*. The *System Settings* pop-up window will appear. Select *Hardware* and click on *Device Manager*. You will find a list with the node *Ports (COM & LPT)* in between.





The upper screenshot displays that COM3 has been assigned for communication with iXm. You will need to set the appropriate COM port in *User* or *Admin Software* (see *User Software* below).

The *User Software* will connect with the device once you have selected the proper COM port and pressed *Connect*.

This setting will be stored and if you close the application and open it next time the COM Port will automatically be the one you used last time, no matter if you start the *Admin* or the *User Software*.

Initial credentials for the Admin Software

The *Admin Software* (other than *User Software*) does require a password. Pressing *Connect* in *Admin Software* will result in a pop-up window asking for username and password. The initial password for 'admin' and 'superadmin' is *qwe123asd*. The 'superadmin' can add or remove users, set (or change) passwords and initiate Firmware Updates.

